



Exploring The Next World Class Copper District in Colombia

MARCH 2024

TSX.V: MAX
OTC: MXROF
FRANKFURT: MID2

DISCLAIMER

This presentation (the “Presentation”) has been prepared solely for information purposes in connection with the contemplated issue of shares in “MAX” or the “Company”) and is being furnished by MAX to a limited number of parties (the “Recipients”) who have a potential interest in subscribing for shares in the Company. The Presentation is strictly confidential and any disclosure, use, copying and circulation of this Presentation is prohibited without the consent of the Company.

The information contained in this Presentation does not constitute or form part of, and should not be construed as, an offer or invitation to subscribe for or purchase the securities discussed herein in any jurisdiction. Neither this Presentation nor any part of it shall form the basis of, or be relied upon in connection with any offer, or act as an inducement to enter into any contract or commitment whatsoever. No representation or warranty is given, express or implied, as to the accuracy of the information contained in this Presentation.

This Presentation contains certain forward-looking statements relating to the business, financial performance and results of the Company and/or the industry in which it operates. Forward-looking statements concern future circumstances and results and other statements that are not historical facts. The forward-looking statements, contained in this Presentation, including assumptions, opinions and views of the Company or cited from third party sources are solely opinions and forecasts which are uncertain and subject to risks. A multitude of factors can cause actual events to differ significantly from any anticipated development. Neither the Company nor any such person’s, officers or employees guarantee that the assumptions underlying such forward-looking statements are free from errors and omissions nor do any of them accept any responsibility for the future accuracy of the opinions expressed in this Presentation or the actual occurrence of the forecasted developments.

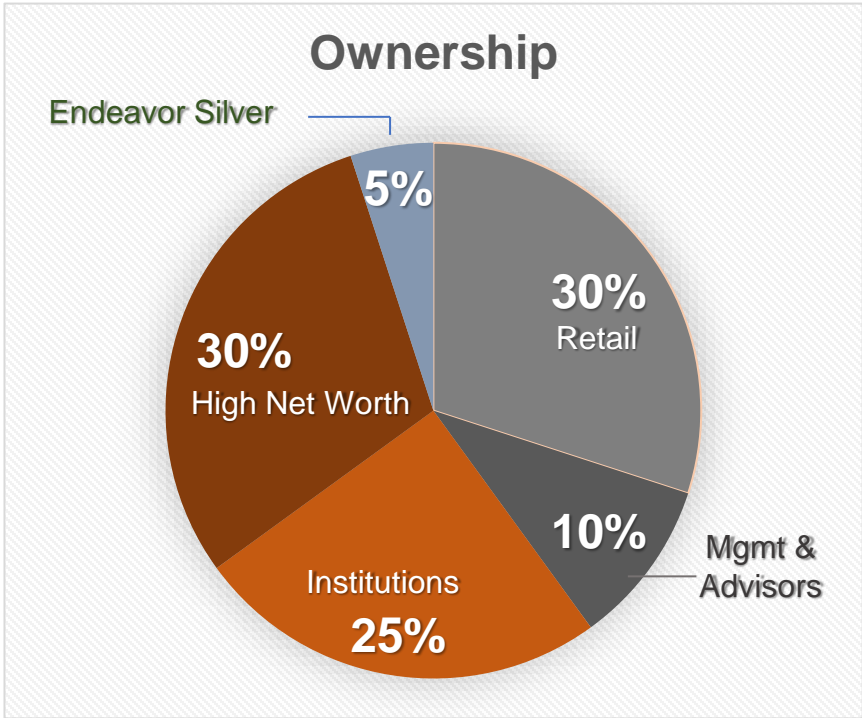
The information contained herein has been prepared to assist the Recipients in making their own evaluation on the Company and does not purport to contain all information that they may desire. In all cases, the Recipients should conduct their own investigation and analysis of the Company, its business, prospects, results of operations and financial condition as well as any other information the Recipients may deem relevant. The Company does not make any representation or warranty, express or implied, as to the accuracy or completeness of this Presentation or of the information contained herein and shall have no liability for the information contained in, or any omissions from, this Presentation, nor for any of the written, electronic or oral communications transmitted to the Recipients (including without limitation its directors, employees, representatives and advisors).

Neither the receipt of this Presentation by any Recipients, nor any information contained herein or supplied herewith or subsequently communicated in written, electronic or oral form to any person in connection with the contemplated issue of shares in the Company constitutes, or shall be relied upon as constituting, the giving of investment advice to any such person. Each person should make their own independent assessment of the merits of investing in the Company and should consult their own professional advisors. By receiving this Presentation you acknowledge and agree that you will be solely responsible for your own assessment of the market and the market position of the Company and that you will conduct your own analysis and are solely responsible for forming your own opinion of the potential future performance of the Company’s business.

The Company’s disclosure of a technical or scientific nature in this presentation and company news releases are reviewed and approved by Tim Henneberry, PGeo (British Columbia), a member of the Max Resource advisory board, who serves as a qualified person under the definition of National Instrument 43-101. The NI 43-101 report, dated March 8, 2023, titled “RT Gold Project, Cajamarca, Peru”, was prepared for Max Resource Corp., by Qualified Person (“QP”) Luis Rodrigo Peralta FAusIMM CP (Geo) in accordance with National Instrument 43-101 Standards of Disclosure for Mineral Projects (“NI 43-101”). This and other reports can be found on the Company’s website at <https://maxresource.com> and on SEDAR at www.sedar.com under the Company’s Issuer Profile. MXR cautions potential subscribers the presence of sedimentary copper mineralization in the Zambian Copper Belt is not necessarily indicative of similar mineralization on the MAX applications and licenses.

CAPITAL STRUCTURE

Basic Shares Out	161,884,325
Options	11,065,000
Warrants	15,503,704
Market Cap	\$22.5m
Cash	\$8.7m



MANAGEMENT & INDUSTRY TEAM

Brett Matich

*CEO & President
M.Eng Aff.M.Asce*

- CEO of ASX, TSX.V, AIM
- Aztec Resources \$300M Merger
- Cape Lambert \$380M Buyout

Bruce Counts

*Senior Technical Consultant
B.Geo, P.Geoscientist*

- 30 years intl mining experience
- Founder, director, senior executive of several exploration companies

Dr. Chris Grainger

*Colombian Expert
PHD, P.Geo*

- 20 years expertise in South America
- Continental Gold; Newmont; VALE
- Resides in Medellin, Colombia

Rahim Lakha

Strategic Advisor

- 25 years in global capital markets
- \$5B in transactions
- Global Mining Advisor

University of Science (AGH)

Krakow, Poland

- Dr. Adam Piestrzyński
- Kupferschiefer Expert
- Geochemistry and Mineralogy
- AGH presentation on www.maxresources.com

Geológica Universidad Colombia

Drill Core – Seismic data

- Structural Study with MAX
- Colombian National Mining (ANM)

COPPER MARKET

Copper Mining M&A Continues as Green Energy Transition Drives Demand¹

Analysts at Wood Mackenzie estimate a greener world will be short about six million tons of copper by next decade²

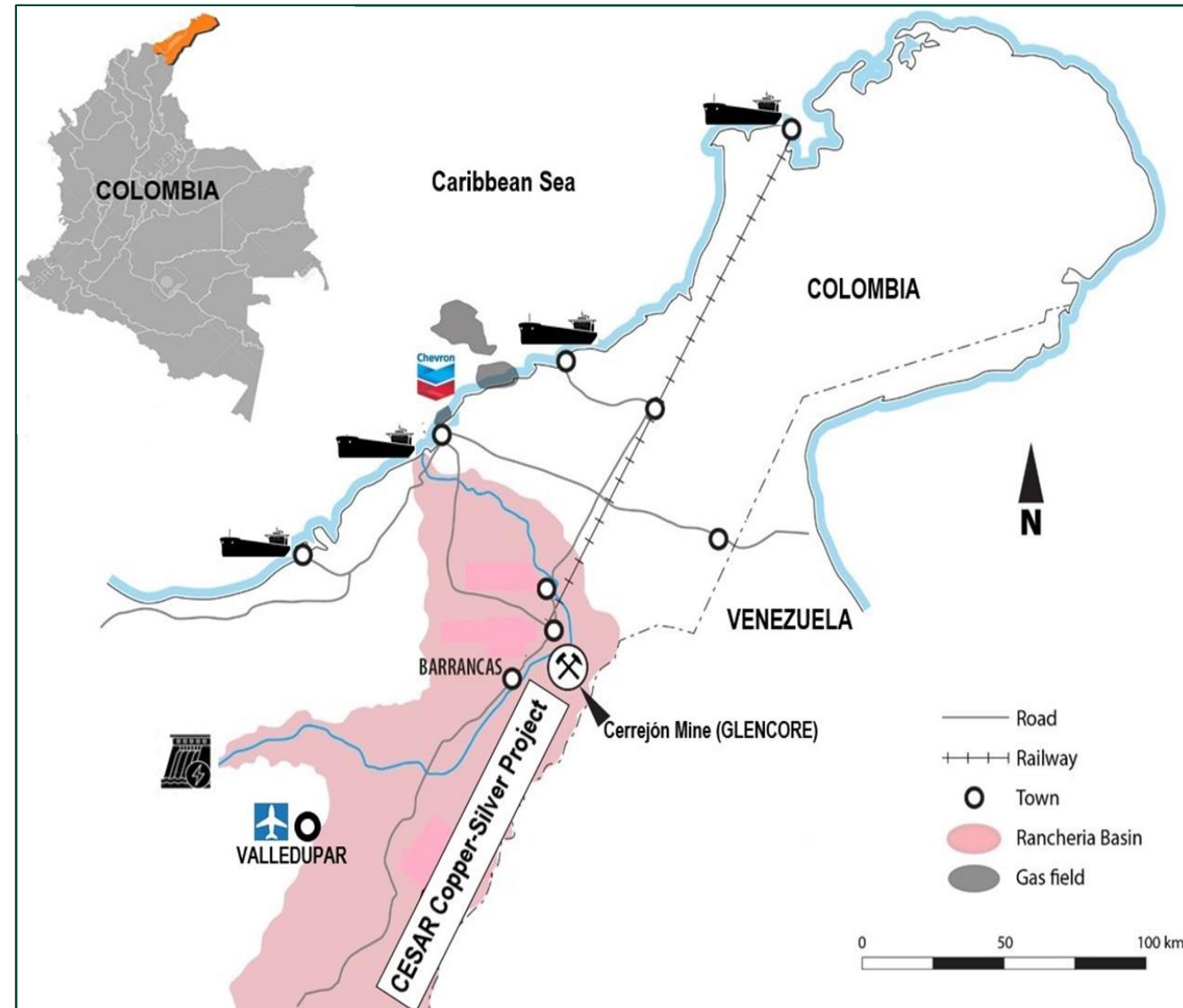


“We harness the potential of copper,” quoted Irene Vélez, Colombia newly appointed Minister of Mines and Energy³

¹[investor intel](#); ² [Mining.com](#); ³Portfolio (Colombia Newspaper) 28-Sep-22

CESAR BASIN – COLOMBIA

- CESAR lies along the copper-silver rich 200-kilometre-long Cesar Basin in northeastern Colombia.
- CESAR Copper-Silver Project is strategically located in mining friendly Northeastern Colombia
- Major infrastructure from oil & gas (Chevron) and mining operations, including Cerrejon, the largest coal mine in Latin America (Glencore).

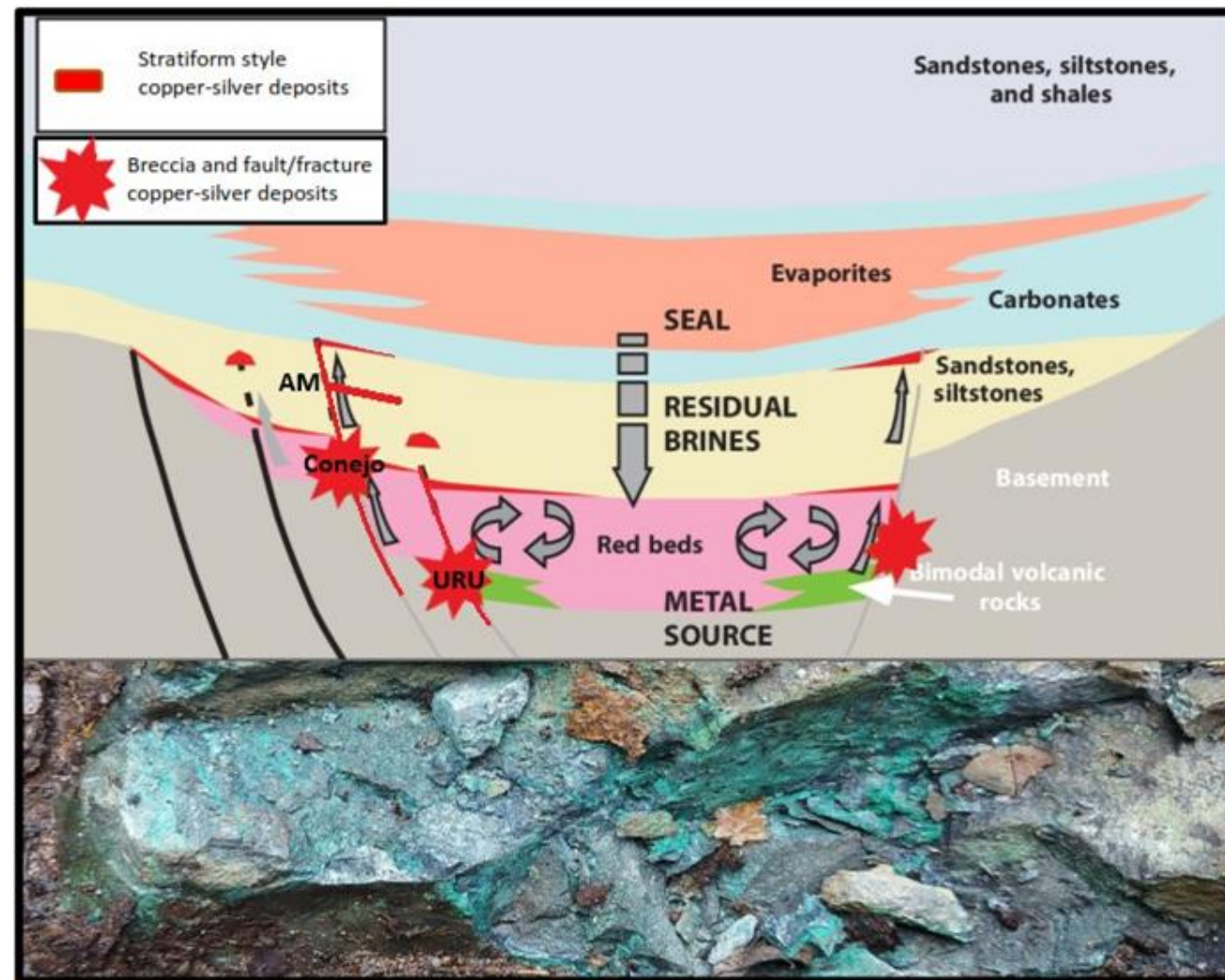


CESAR BASIN

Simplified Jurassic-Triassic Stratigraphy and Deposit Types

Jurassic Saldana Formation

UPPER	<p>Continental felsic/intermediate volcanic rock and marine sediments</p> <p>Jurassic porphyry Cu-Mo-Au and porphyry related vein systems</p> <p>Internal unconformity</p>
LOWER	<p>Continental red-beds (conglomerates, sandstones, shales) evaporites and minor volcanic lenses</p> <p>Volcano-sedimentary sequence 9 intermediate volcanics, conglomerates, shales</p> <p>Sediment-hosted style Cu-Ag deposits</p> <p>Unconformity</p>
Triassic Payande Formation	<p>Limestones, sandstones, and shales</p> <p>Skarns related to Jurassic batholith emplacement</p> <p>Unconformity</p>
	<p>Neoproterozoic metamorphic basement</p>



CESAR PROJECT

Exploration for Copper & Silver spanning 90km

AM discovery (2020) – 100% owned

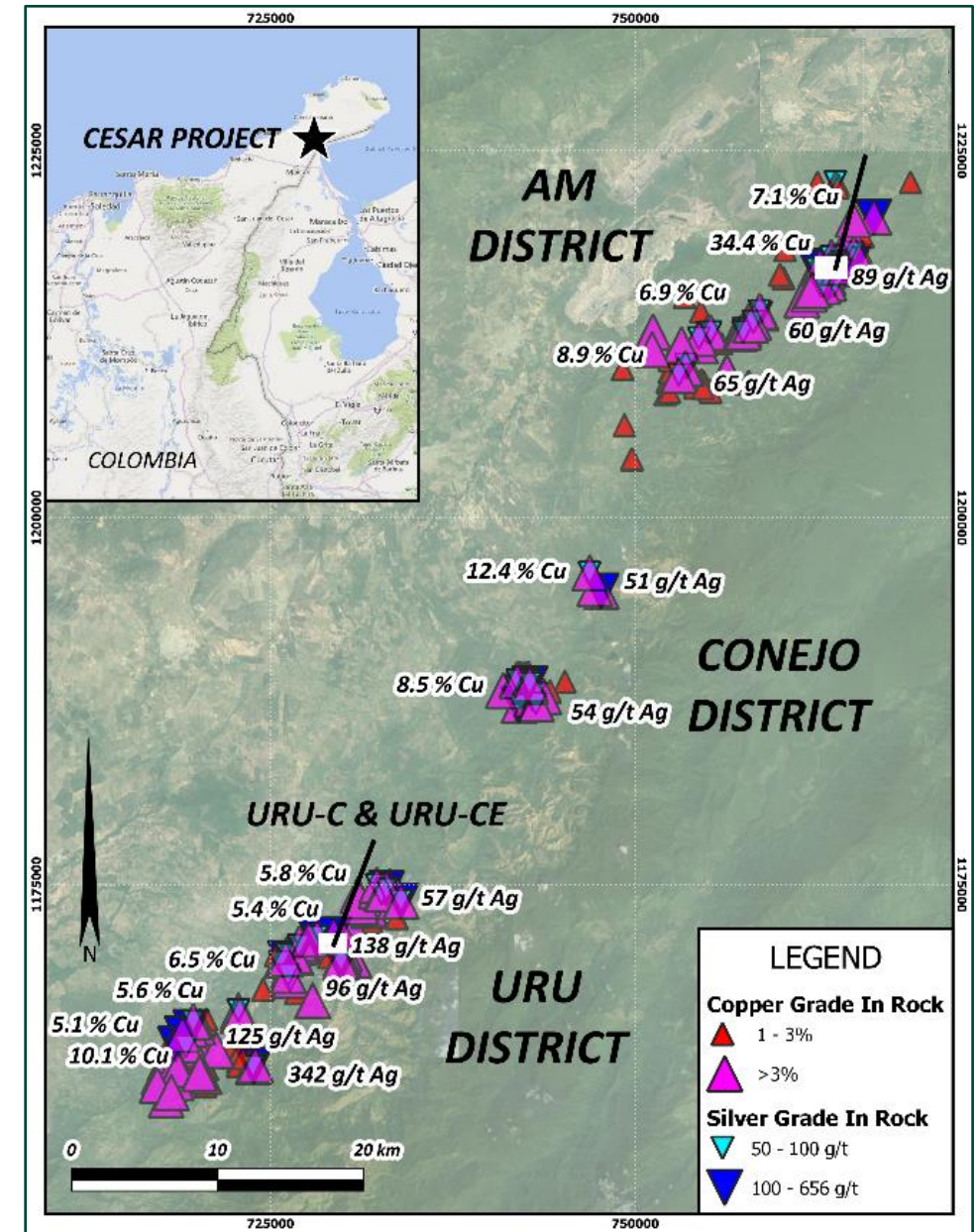
- “Kupferschiefer-type” copper system spans 20 kms
- Highlight samples: 34.4% copper and 305 g/t silver
- Approved Concessions cover 114-km²

Conejo discovery (2021) – 100% owned

- High-grade copper-silver, 40km south of AM
- Spans 3.7 kms, samples over 3.7 km averaging 4.9% copper (2% cutoff)
- Open in all directions

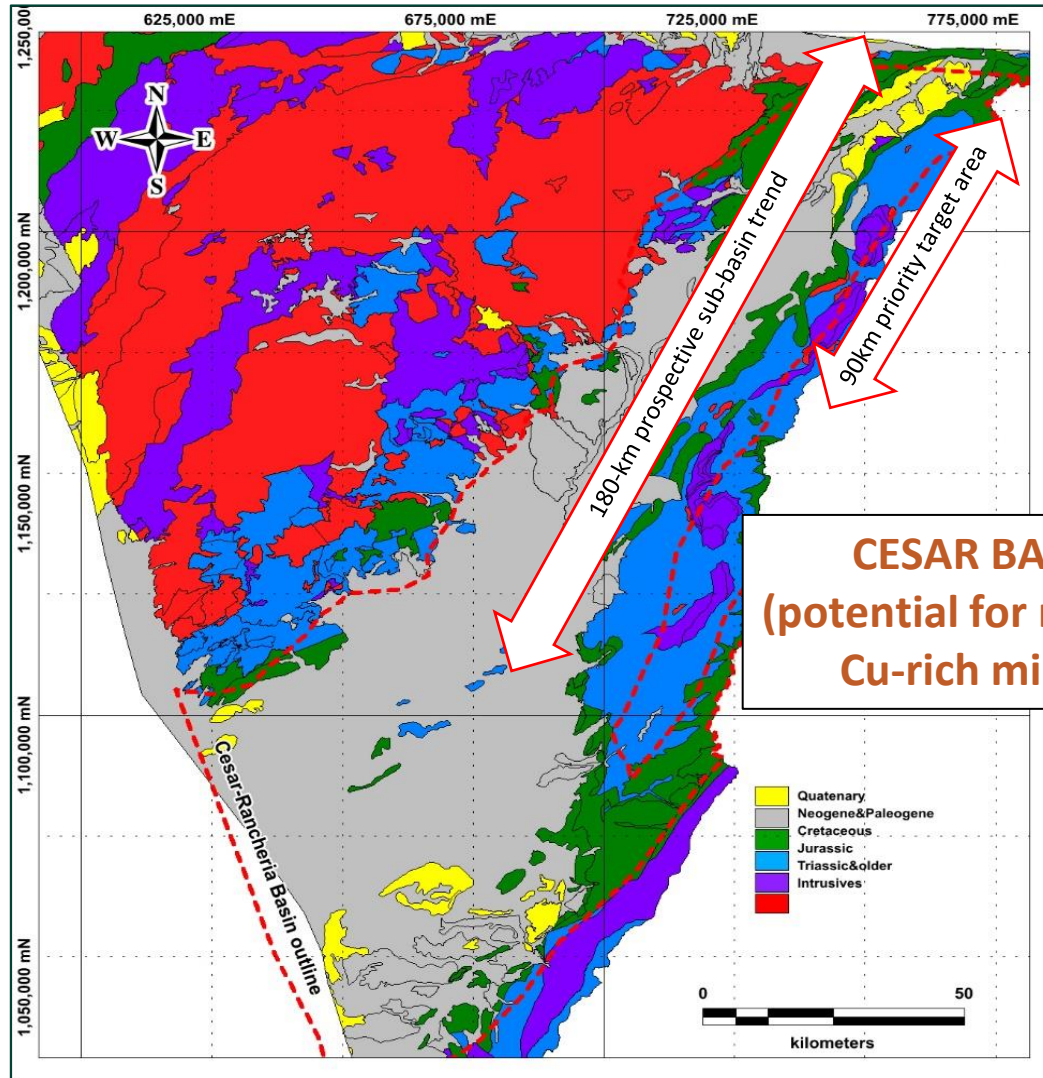
URU discovery (2021) – 100% owned

- “African belt-type” system, 30km south of Conejo
- Highlight samples of 14.8% copper and 132 g/t silver
- Approved mining concessions cover 74-km²
- 2,200 meters of drilling in 2022

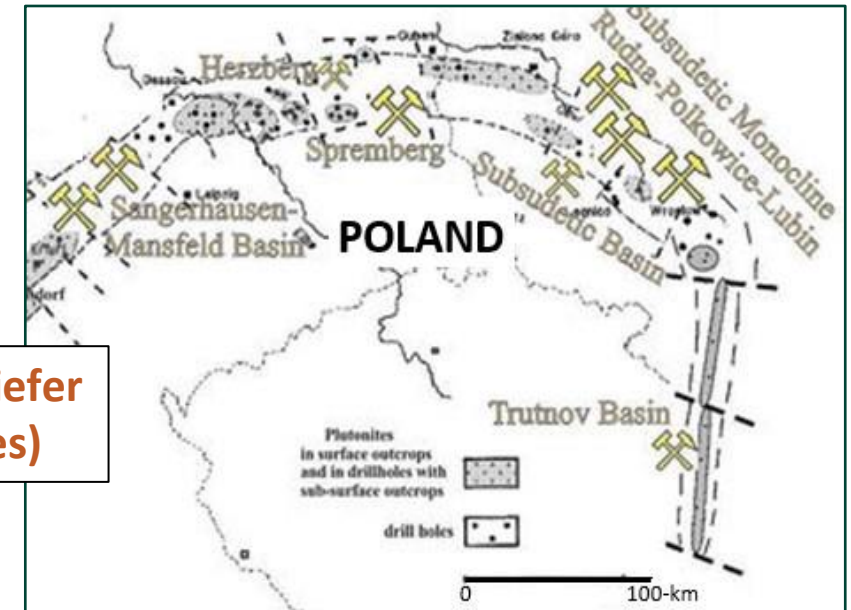


CESAR BASIN

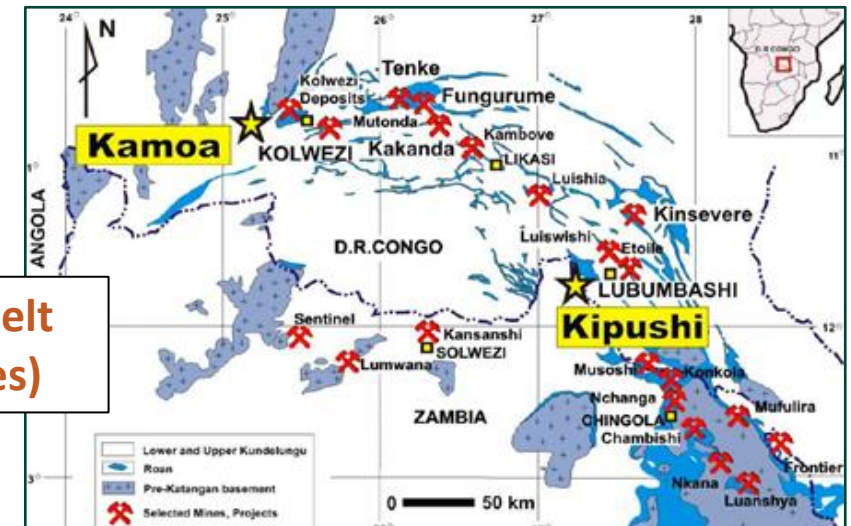
Analogous to the world's largest sediment-hosted producing copper districts



CESAR BASIN
(potential for multiple
Cu-rich mines)



Kupferschiefer
(11 mines)

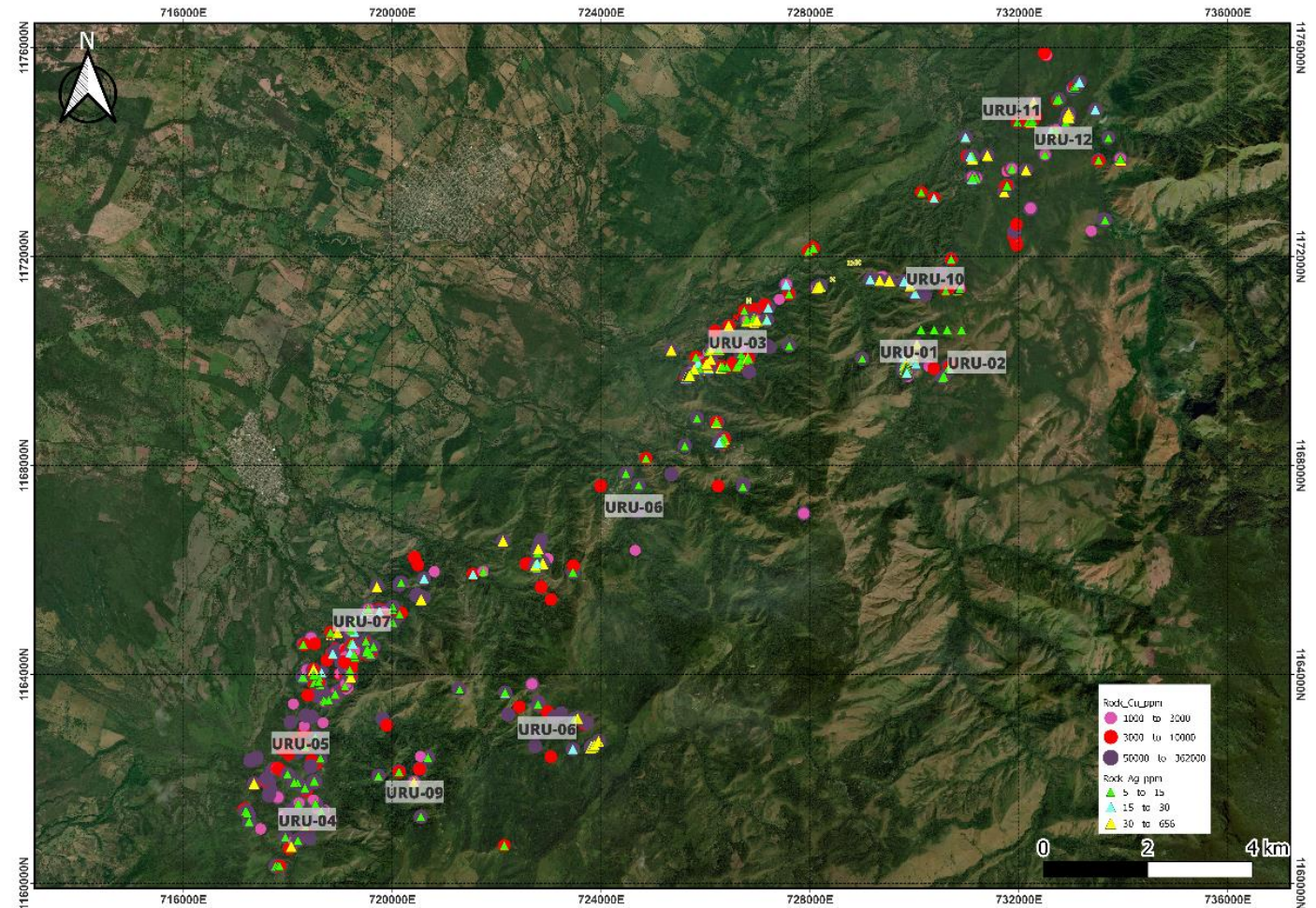


African Belt
(20 mines)

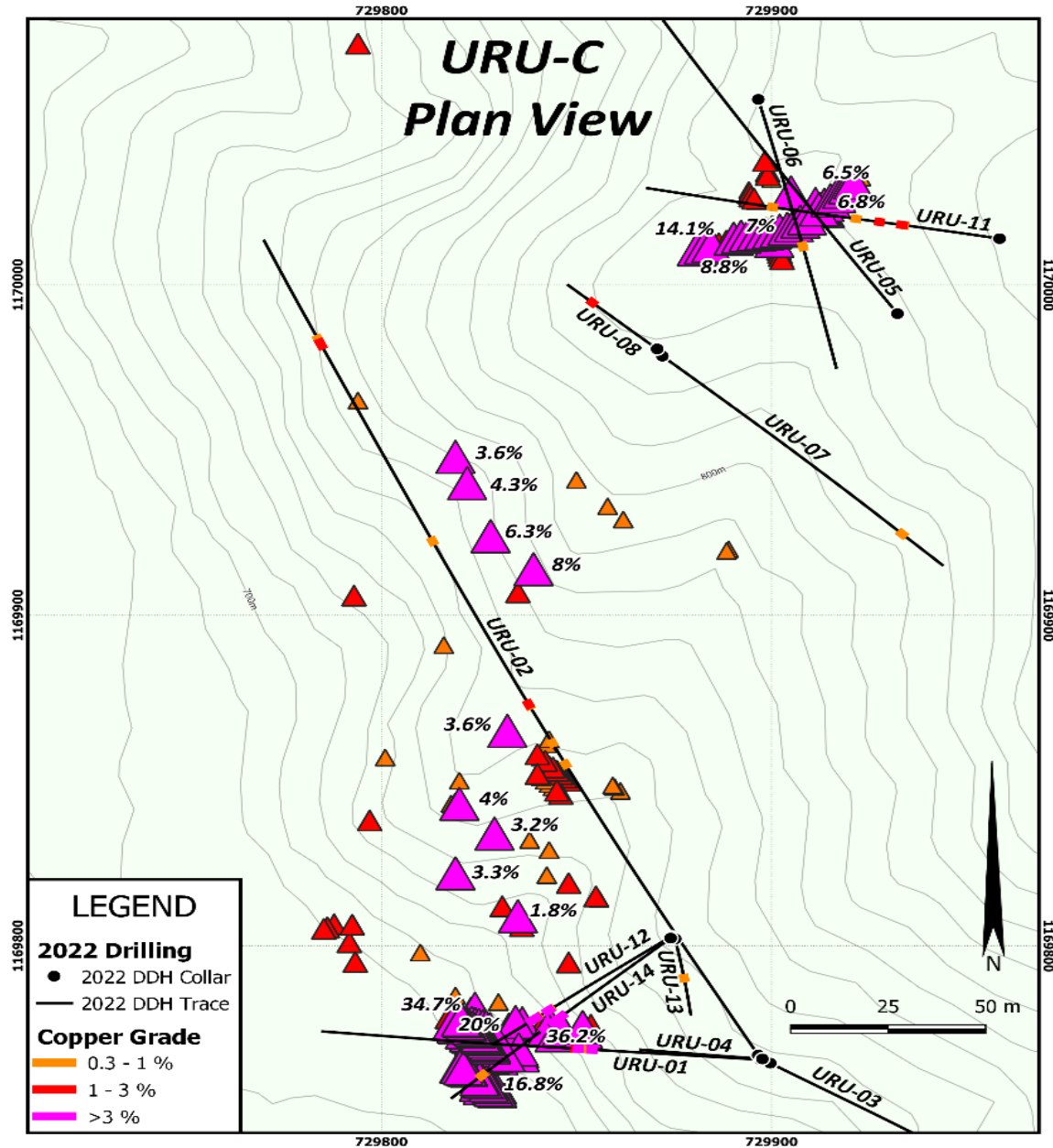
URU DISCOVERY: 2022 DRILL PROGRAM

Max is first to drill for copper in the CESAR basin

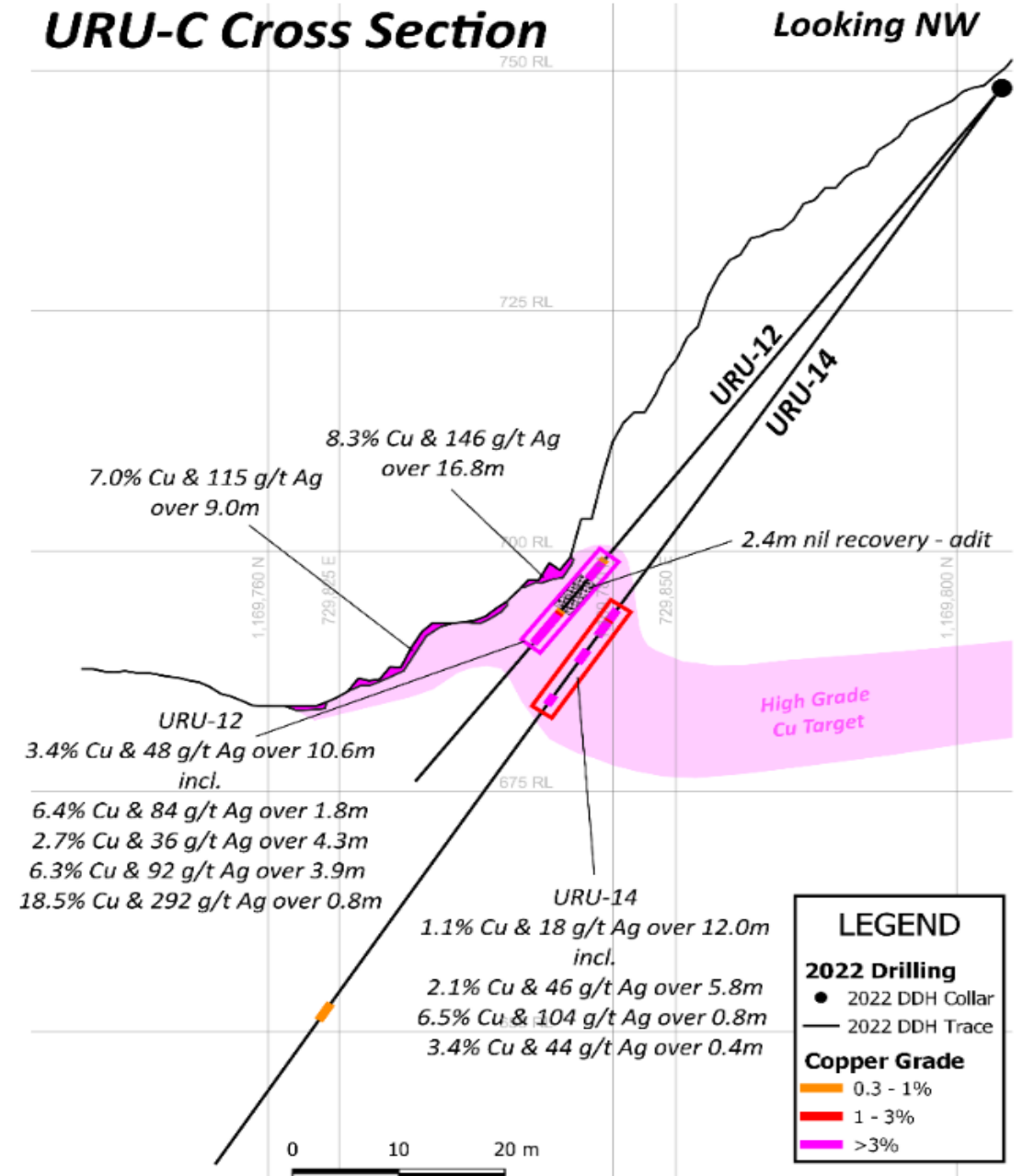
- 12 holes over 2,244m at the URU-C and URU-CE targets located 750m apart
- All 12 holes intersected mineralized zones, 6 intersected significant copper-silver mineralization and confirms continuation of the copper-silver mineralization at depth
- **URU-C Highlights**
 - URU-12 intersected 10.6m of 3.4% copper and 48 g/t silver, including 0.8m of 18.5% Cu + 292 g/t silver
- **URU-CE Highlights**
 - URU-9 intersected a broad zone of Copper Oxide returning 33.0m of 0.3% copper, including 16.5m of 0.5% copper.
 - The broad associated alteration zone implies the potential for a bulk tonnage system



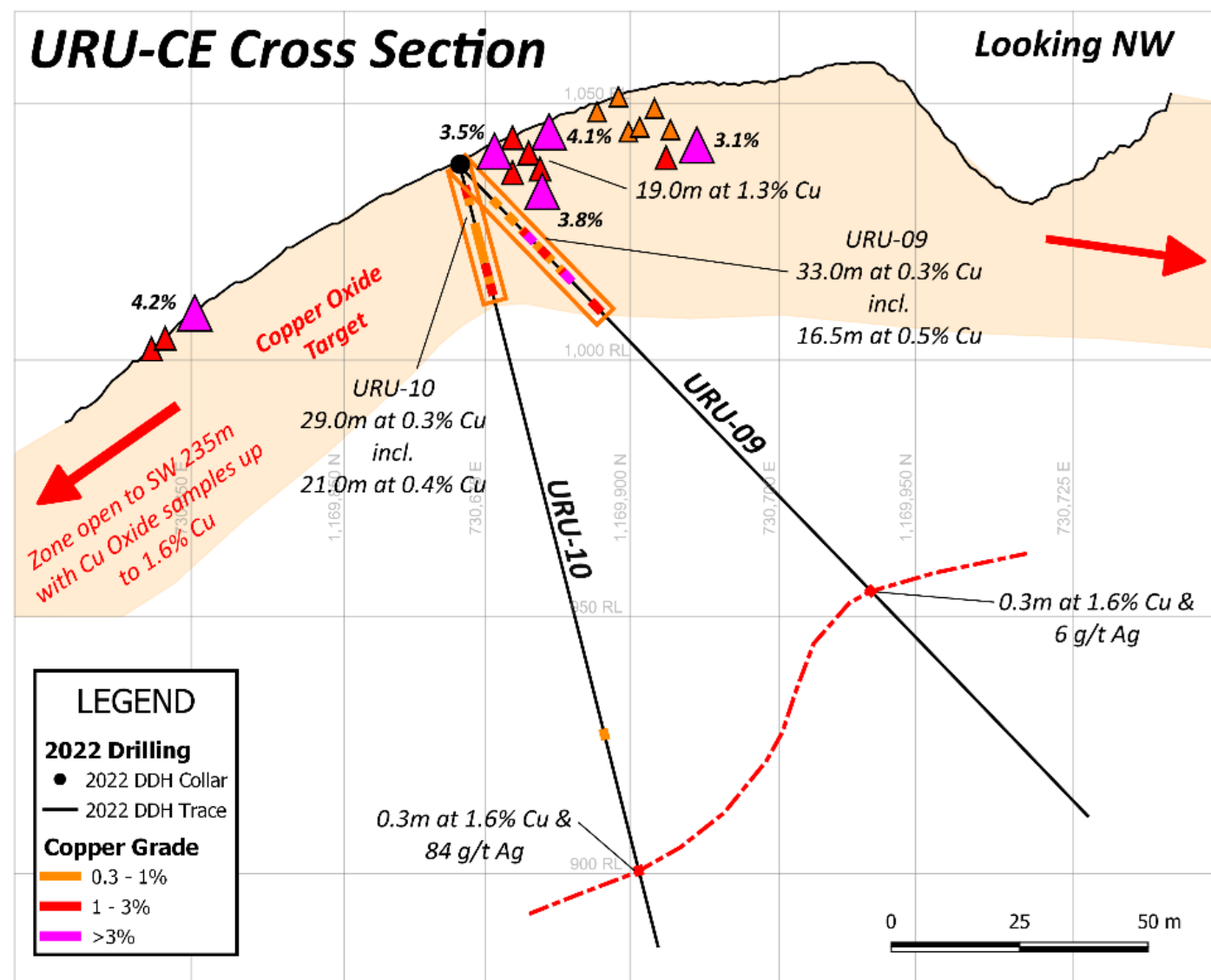
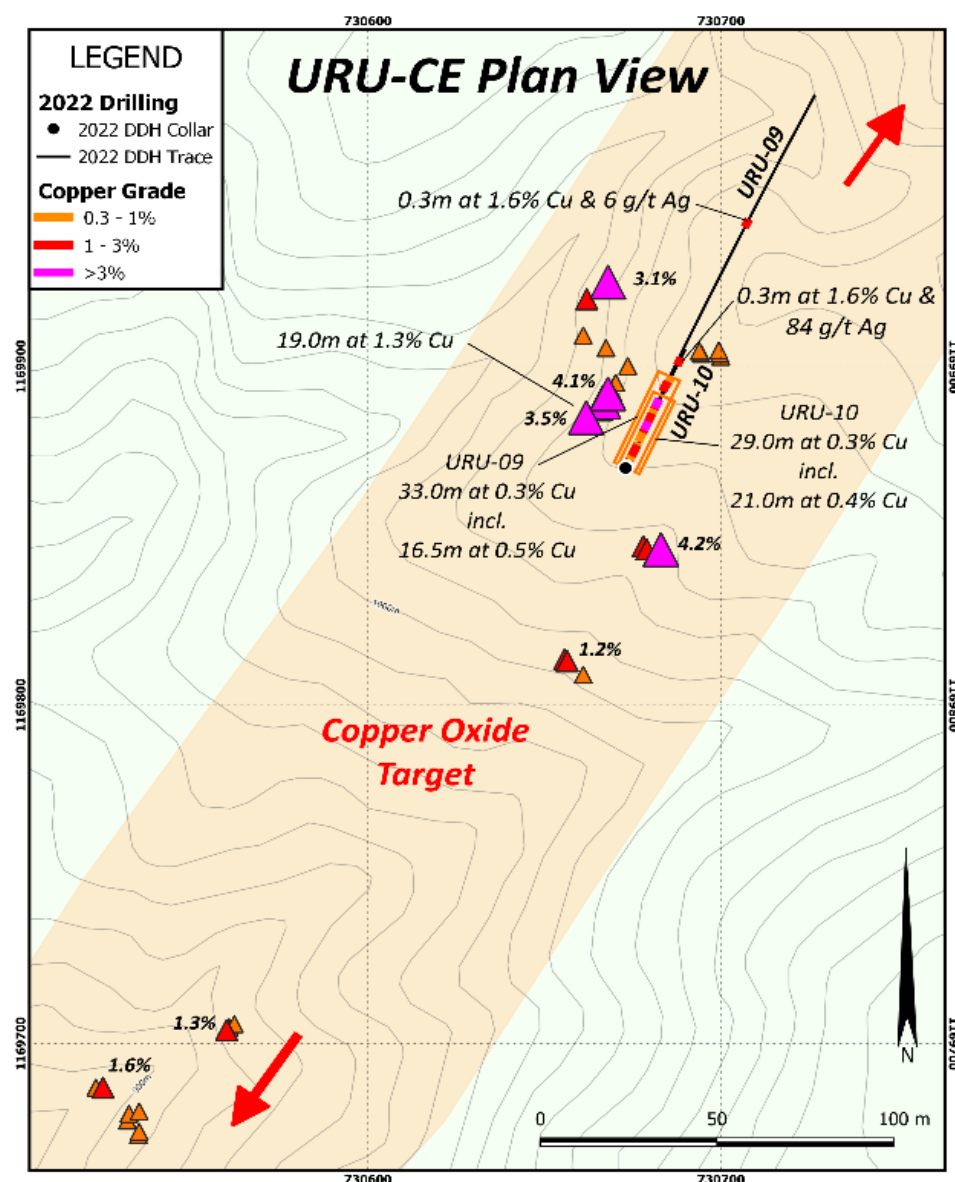
URU-C DRILL PROGRAM



URU-C Cross Section



URU-CE DRILL PROGRAM

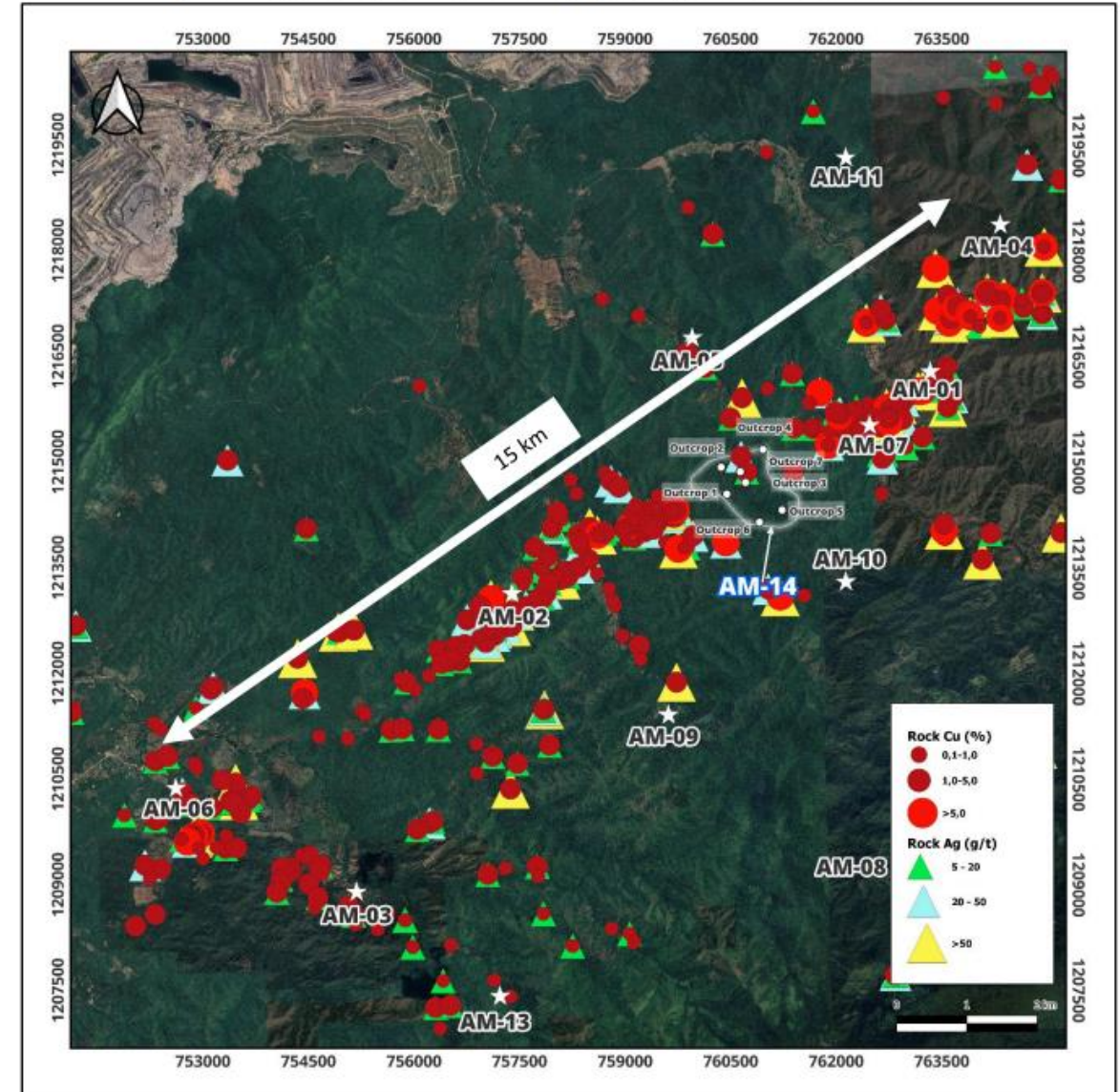


AM DISTRICT

- Northern end of the 90km-long CESAR copper-silver belt
- 15 Mining Concessions cover 114km² and AM-1 to AM-14 targets
- Highlight surface values of 34.4% copper and 305 g/t silver
- 2023: Two scout drill holes confirmed the continuity down dip from surface copper-silver exposures
- Conducted high-resolution magnetic and radiometric survey
- Conducting geochemistry, mapping and geophysics to identify more drill targets

AM spans 20km in length

Image showing 15-km corridor of high-grade copper-silver mineralization at AM.



AM DISTRICT – 2023 DISCOVERY

- Discovery of a significant copper-silver system, called AM-7, which is located on 1 of 7 new Application for Mining Concessions. The AM-7 mineralized horizon is a tabular body that ranges from 0.3m to 2m in width, extends over 1600m along strike and is open in all directions.
- AM-7 encompasses 5 historic open cut copper workings extending over 700m.
- Rock chip and channel samples have been collected and results are pending.



Pit 3 – AM-7



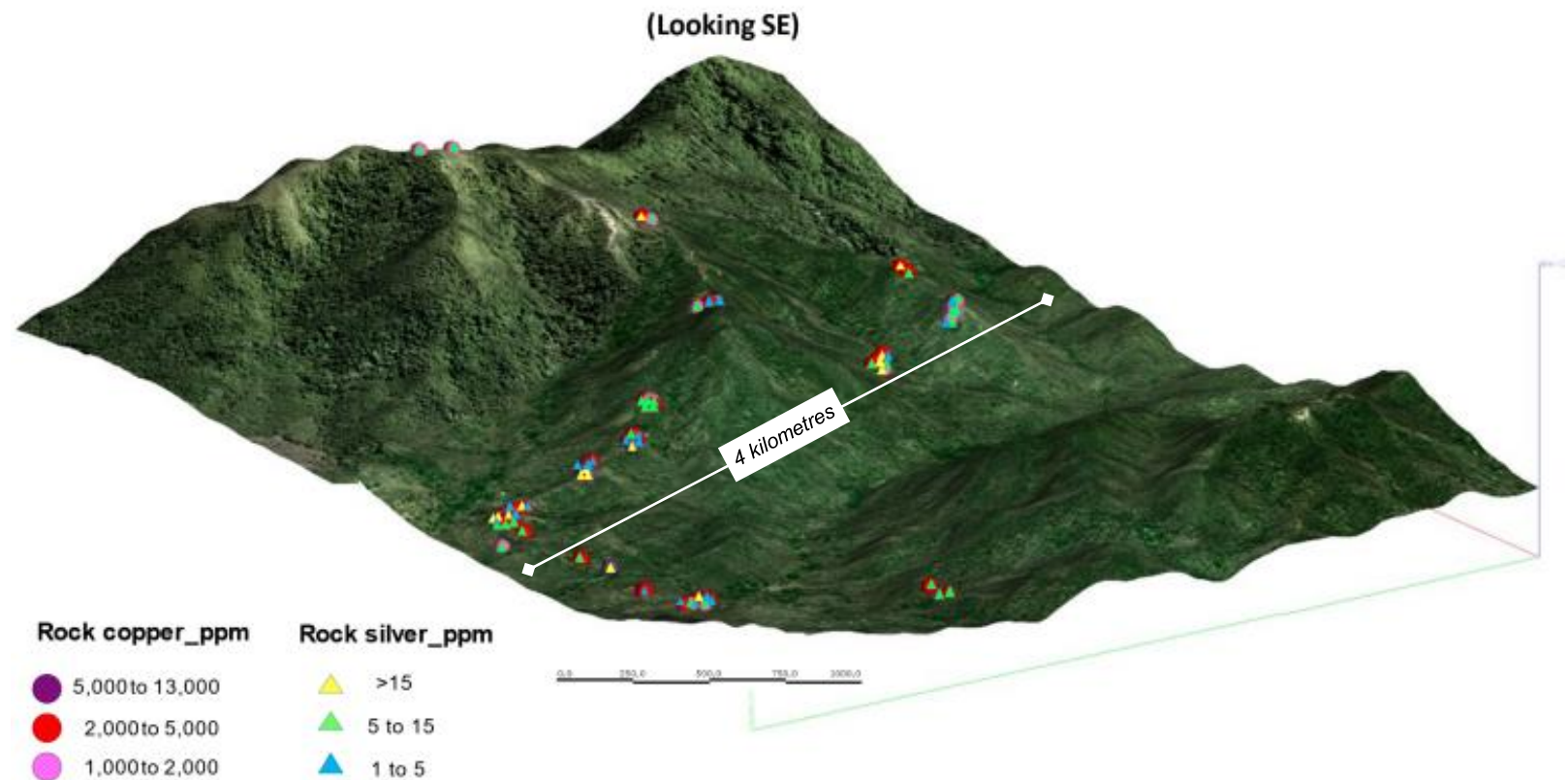
Pit 5 –AM-7

CONEJO DISCOVERY

+3.7km Cu/Ag zone

- Located 30km south of AM District
- *Outcrop #2*
- *Samples averaged 4.9% copper (2% cut-off)*
- *+3.7km length remains open in all directions*

CONEJO 3D MODEL



CONEJO

“Outcrop 1” located 1.6km east of “Outcrop 2”



eser Institute Annual Survey of Mining Companies 2020 Page 8

“Outcrop 1”

MILESTONES

2020

- ✓ Discovery of AM (analogous to Kupferschiefer)
- ✓ Co-operation AGH University
- ✓ Awarded 4 concessions
- ✓ \$1.1m raised at \$0.105
- ✓ \$6.5m raised at \$0.24
- ✓ Strategic investment by Eric Sprott

2021

- ✓ Discovery of Conejo & URU (analogous to African Copper Belt)
- ✓ Collaboration with Colombian Geological University
- ✓ Community Employment
- ✓ Awarded 15 Concession, more than any other company in Colombia
- ✓ Top 10 TSXV Ranked Company in Mining Sector

2022

- ✓ Discovery of URU-C+URU-CE
 - 9m at 7%Cu + 115g/t Ag
 - 16.8m at 8%Cu + 146g/t Ag
- ✓ 20 mineral concessions awarded covering 187 km²
- ✓ \$7.7m raised at \$0.26
- ✓ \$17.7m raised at \$0.60
 - 5% Endeavour Silver
 - 5% Franklin Templeton
 - 5% Merk Investments
 - 5% Eric Sprott
- ✓ Commenced first ever drill program for copper in the CESAR basin
- ✓ Scout drilling at the AM District has confirmed Kupferschiefer style stratiform mineralization

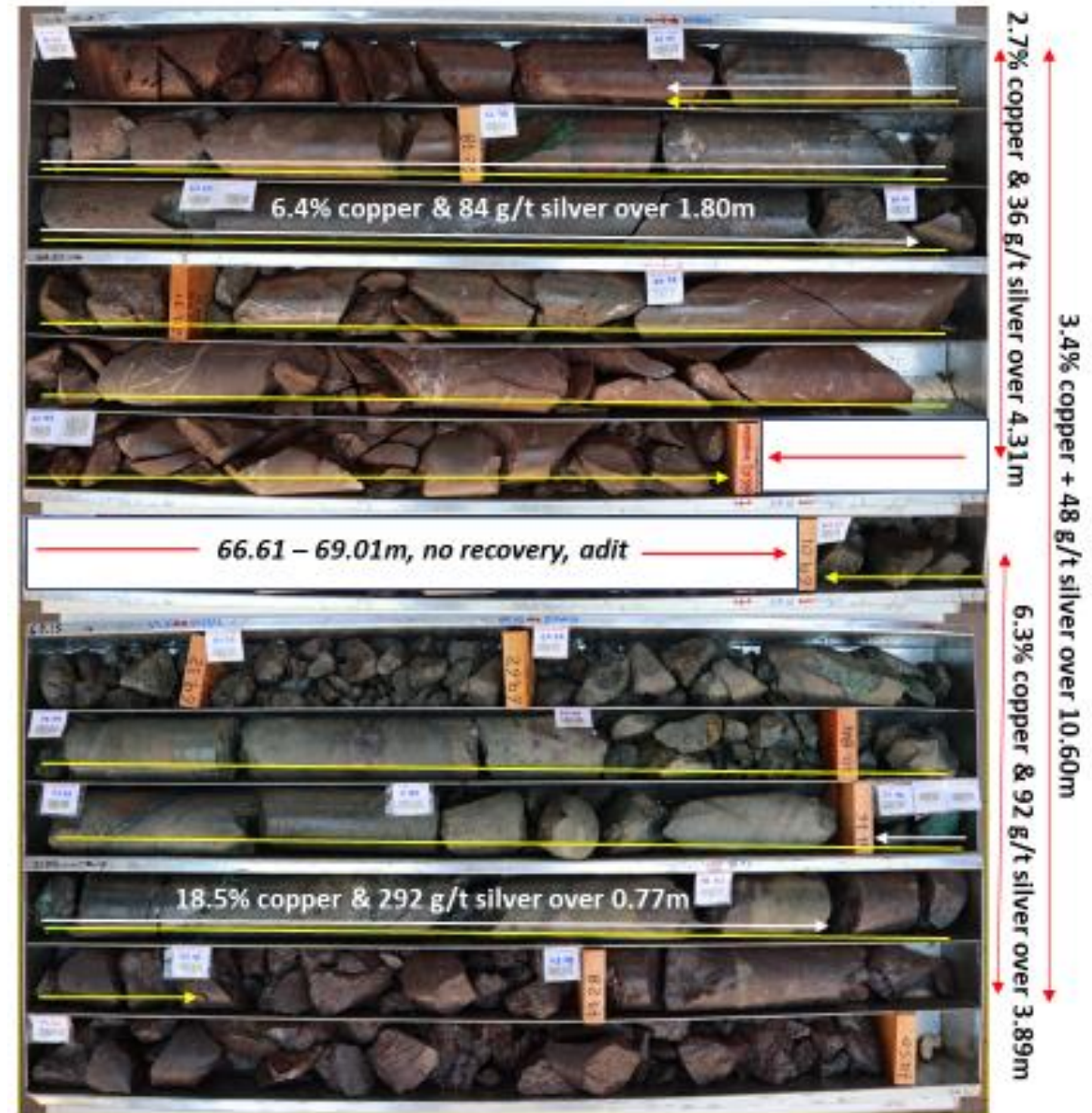
2023

- ✓ First assays results from drill program
- ✓ 2023 program:
 - Identify priority drill targets
 - Conducting high-resolution magnetic and radiometric survey on AM Zone
 - Geophysical surveys, mapping, and stream sediment surveys
- ✓ Drilling to resume in 2024



2023 EXPLORATION

- Fully funded exploration program underway focused in 21 copper-silver targets: AM-1 to 7, Conejo-1 to 3 and URU-1 to 12
- Revisiting clusters of the outcrops with grades $>1.0\%$ copper with the objective of delineating feeders
- Conducting high-resolution airborne magnetic and radiometric survey over the entire AM District
- Geophysical survey (MT), mapping, and stream sediment surveys
- Metallurgical tests on high-grade URU-C and URU-C bulk tonnage leaching
- Resume drilling in 2024



WHY INVEST IN MAX?

- Management has a track record of significant mineral discoveries (\$2 billion value add)
 - Self funded exploration and drilling programs: \$8.7M cash
 - Wholly-owned **CESAR Copper-Silver Project**: located within a prolific mining region (Glencore and Chevron):
 - **URU-C** and **URU-CE** first diamond drill program demonstrates proof of concept
- Fully funded 2023 exploration programs have commenced:
- Conducting high-resolution magnetic and radiometric survey on AM
 - Metallurgical tests on high-grade URU-C floatation and URU-C bulk tonnage leaching
 - Only tested 2 drill targets along the 20km URU District
 - Geophysical, mapping and geochemistry to identify multiple drill targets and build the model of the 200 x 20km Cesar Copper-Silver basin
 - Planned drilling – AM and URU Mining Concessions (188km²)
 - Significant landholding expansion with miner Endeavour Silver
- **RT Gold** in northern Peru, historic drilling returned values ranging 3.1 to 118.1 g/t gold over core lengths ranging from 2.2 to 36.0m



CONTACT US

Exploring The Next World Class **Copper** District in Colombia

Tim McNulty, Communications
(+1) 604 290 8100

Email: info@maxresource.com

Rahim Lakha, Strategic Advisor
Email: rahim@bluesailcapital.com

www.maxresource.com

TSX.V: MAX
OTC: MXROF
FRANKFURT: MID2



APPENDIX

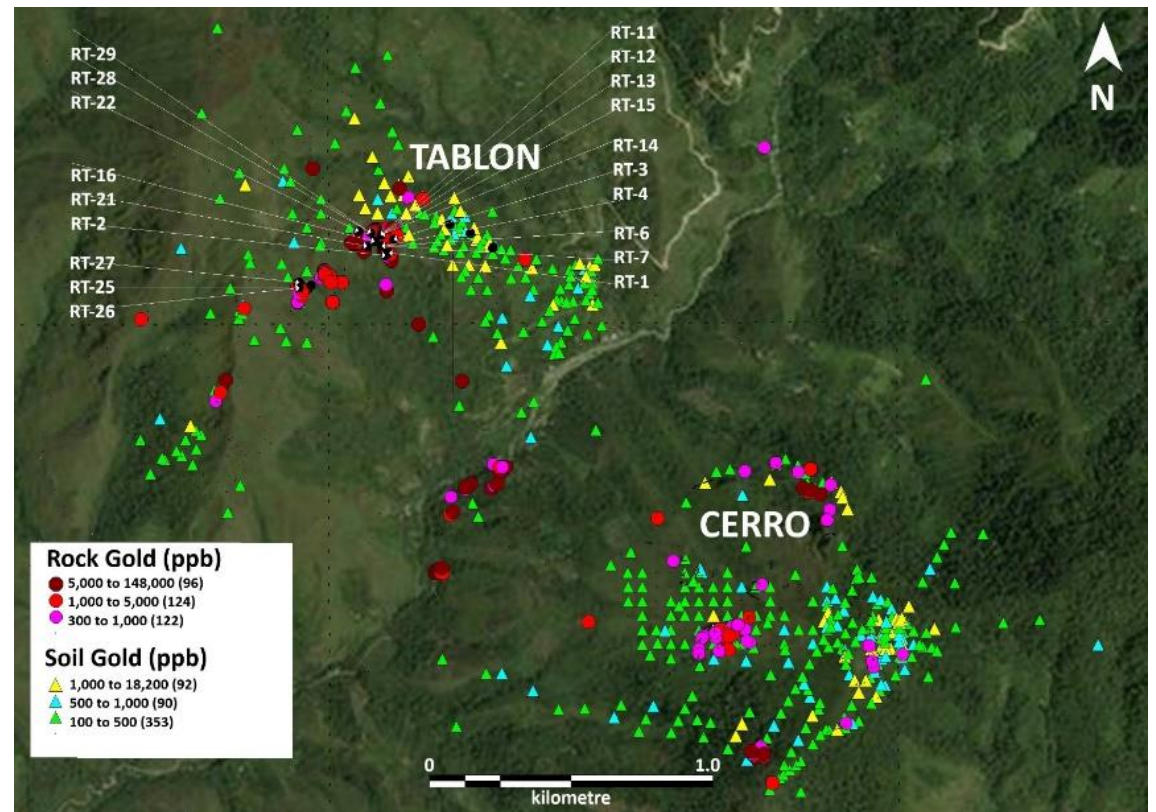
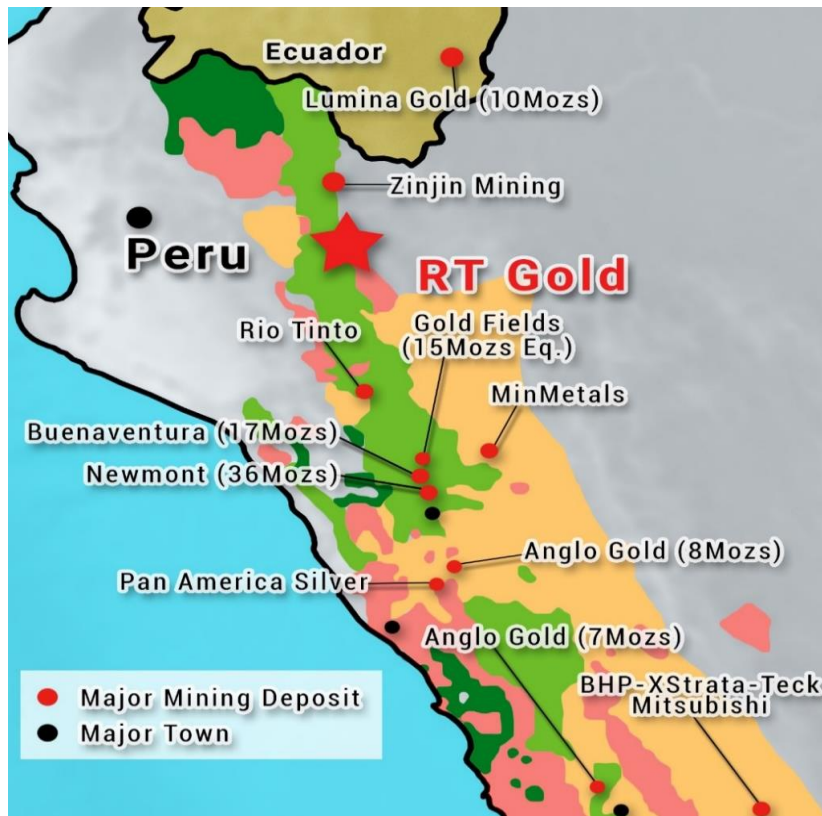
Exploring The Next World Class **Copper** District in Colombia



TSX.V: MAX
OTC: MXROF
FRANKFURT: MID2

RT GOLD PROJECT

- Located in northern Peru along the Cajamarca Metallogenic belt, which hosts several world class deposits and extends north from Central Peru into Southern Ecuador. RT has two high-grade gold targets:
 - TABLON Zone, a high-grade gold-bearing massive sulfide, and 3-km SE lies,
 - CERRO Zone, a bulk tonnage primary gold-bearing porphyry
- The RT Gold 43:101 Technical Report (June 29, 2023 NR) can be found on the Company's website at <https://maxresource.com> and on SEDAR at www.sedar.com under the Company's Issuer Profile



RT GOLD PROJECT

Highlight Assays from NI 43-101 Filed June 2023

- 2021 re-assays of 2001 drill core confirms previous drill program and validates the true potential of the two distinct gold-bearing systems.
- Exceptional near surface high-grade-gold with associated credits of copper, silver and zinc over substantial intervals.
- Next steps include environmental survey in preparation for a drilling program.

DDH No.	From (m)	Interval (m)	Gold (g/t)	Silver (g/t)	Copper	Zinc
RT-6	8.2	26.3	3.3	14.9	0.25%	0.25%
RT-7	9.6	20.3	2.2	4.2	1.80%	0.29%
RT-11	10.7	10.5	4.7	7.9	0.09%	0.02%
RT-13	13.4	26.5	10.8	20.7	0.12%	0.29%
RT-15	12.8	8.6	6.6	6.1	0.05%	0.01%
RT-16	16.2	4.9	10.1	12.8	0.11%	0.04%
RT-22	39.4	12.5	3.5	5.2	0.10%	0.04%
RT-29	34.9	16.4	3.8	5	0.07%	0.04%

RT GOLD: Tablon Zone

- ✓ 2021 re-assays of TABLON diamond drill 2001 core demonstrate the exceptional near surface high-grade-gold drill results and associated credits of copper, silver and zinc over substantial intervals
- ✓ The gold-bearing mineralization is associated with highly anomalous silver and copper values.
- ✓ Multi element suite of data allows Max to examine metal ratios and zoning patterns for target generation and geological interpretation purposes

Interval	Gold	Silver	Copper	Zinc	From	DDH No.
26.5m	10.8 g/t	20.7 g/t	0.12%	0.29%	13.4m	RT-13
26.3m	3.3 g/t	14.9 g/t	0.25%	0.25%	8.2m	RT-6
20.3m	2.2 g/t	4.2 g/t	1.80%	0.29%	9.6m	RT-7
10.5m	4.7 g/t	7.9 g/t	0.09%	0.02%	10.7m	RT-11
8.6m	6.6 g/t	6.1 g/t	0.05%	0.01%	12.8m	RT-15
4.9m	40.1 g/t	12.8 g/t	0.11%	0.04%	16.2m	RT-16
12.5m	3.5 g/t	5.2 g/t	0.10%	0.04%	39.4m	RT-22
16.4m	3.8 g/t	5.0 g/t	0.07%	0.04%	34.9m	RT-29

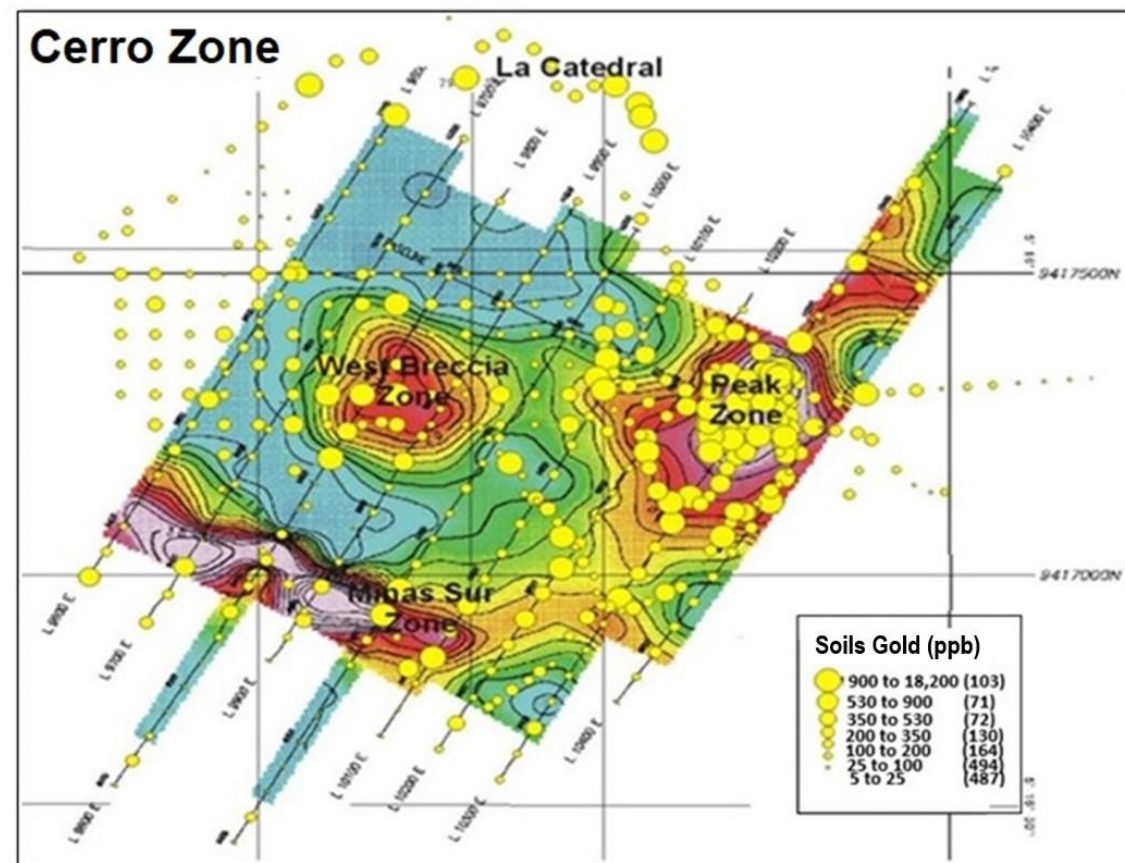
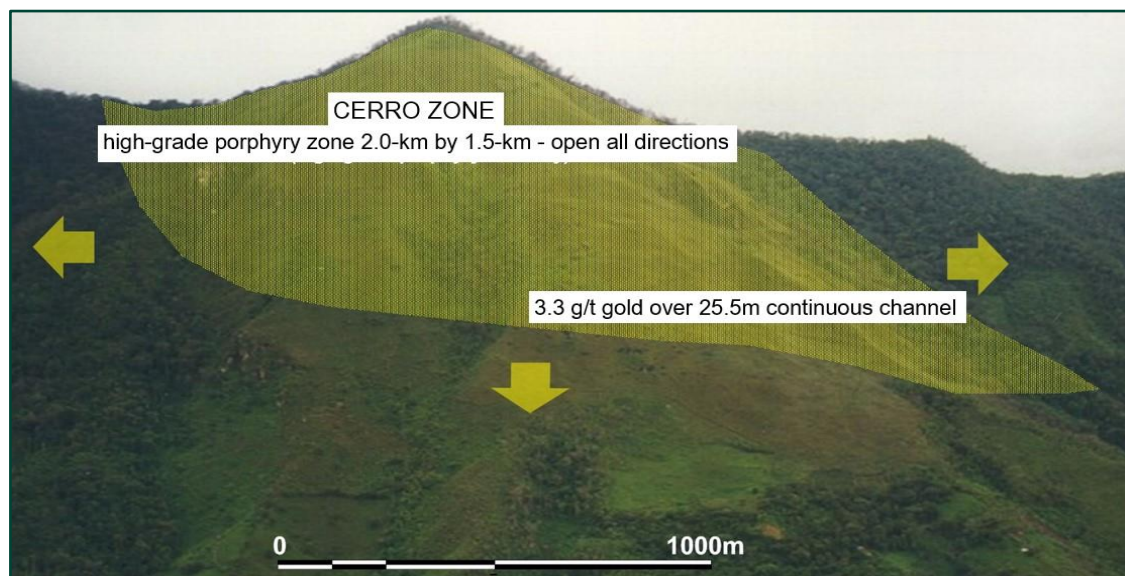


RT GOLD: Cerro Zone (multi m/oz target)

Cerro Zone: high-grade primary gold porphyry

- ✓ 2.0-km by 1.5-km gold rich zone, open in all directions
- ✓ Values range 0.1 to 4.0 g/t gold
- ✓ 0.1 to 62.9 g/t gold structures
- ✓ 3.3 g/t gold over 25.5m continuous channel
- ✓ Strong IP response is coincident to gold anomaly
- ✓ Mapping adits/expand zone

The next step is to conduct an environmental survey in preparation for a drilling program to further expand TABLON and to test the outstanding intrusive target at CERRO which has never been drilled



RT GOLD: Historic Diamond Drilling Comparative Assays

Historical Intercepts (2001)						Max Resource Intercepts (2021)							
DDH Number	From (m)	To (m)	Interval (m)	ICP/AA - FA Gold (g/t)		DDH Number	From (m)	To (m)	Interval (m)	ICP/AA - FA Gold (g/t)	Silver (g/t)	Copper (ppm)	Zinc (ppm)
RT-1	13.50	15.00	1.50	1.16		RT-1	13.90	14.45	0.55	15.85	6.7	433	535
RT-2	39.50	39.94	0.44	44.05		RT-2	37.80	39.80	2.00	17.44	6.7	1,851	1,959
RT-3	62.18	62.85	0.67	49.99		RT-3	62.20	62.85	0.65	0.28	0.5	131	101
and	105.76	106.10	0.34	54.89		and	86.80	88.30	1.50	0.81	1.7	205	141
						and	107.20	107.60	0.40	15.65	7.8	8,440	865
RT-4	7.85	11.90	4.05	2.23		RT-4	7.90	11.80	3.90	3.13	28.6	1,967	31,417
and	18.02	20.29	2.27	2.67		and	18.45	20.30	1.85	2.55	13.4	1,560	37,818
and	26.29	28.42	2.13	2.61		and	25.25	27.65	2.40	1.34	3.7	345	3,980
RT-6	9.07	30.48	21.41	3.10		RT-6	8.15	34.50	26.35	3.31	14.9	2,529	2,546
including	9.07	15.24	6.17	5.48									
RT-7	10.08	30.00	19.92	2.41		RT-7	9.60	29.85	20.25	2.20	4.2	18,010	2,855
including	10.08	12.55	2.47	4.55									
RT-11	12.01	29.10	17.09	5.32		RT-11	10.67	21.20	10.53	4.68	7.9	904	233
including	15.54	18.20	2.66	14.20									
RT-12	17.41	21.76	4.35	4.71		RT-12	17.41	21.75	4.34	5.62	64.3	555	292
RT-13	13.41	38.83	25.42	8.78		RT-13	13.41	39.90	26.49	10.82	20.7	1,230	2,905
including	19.85	22.75	2.90	19.81		including	20.20	23.60	3.40	20.21	41.0	1,569	101
including	31.21	38.83	7.62	12.61		including	31.00	37.75	6.75	18.40	23.7	2,243	9,731
including	33.72	34.72	1.00	28.24									
RT-14	17.68	19.36	1.68	5.47		RT01-14	17.68	19.35	1.67	5.75	33.8	456	1,028
RT-15	12.80	19.20	6.40	5.85		RT-15	12.80	21.40	8.60	6.57	6.1	540	123

RT GOLD: Historic Diamond Drilling Comparative Assays

Historical Intercepts (2001)						Max Resource Intercepts (2021)							
DDH Number	From (m)	To (m)	Interval (m)	ICP/AA - FA Gold (g/t)		DDH Number	From (m)	To (m)	Interval (m)	ICP/AA - FA Gold (g/t)	Silver (g/t)	Copper (ppm)	Zinc (ppm)
RT-16	16.17	20.07	3.90	13.18		RT-16	16.17	21.05	4.88	40.13	12.8	1,104	389
						RT-18	20.90	23.50	2.60	0.01			
RT-21	1.52	10.97	9.45	5.08		RT-21	1.50	10.95	9.45	3.99	4.7	241	731
RT-22	8.45	9.50	1.05	2.58		RT-22	8.55	9.50	0.95	4.87	6.4	785	62
and	31.39	33.80	2.41	3.21		and	31.39	34.85	3.46	0.77	2.3	1,301	516
and	40.75	54.86	14.11	4.85		and	39.35	51.90	12.55	3.46	5.2	10,020	357
RT-25	33.00	36.10	3.10	12.97		RT-25	-	10.50	10.50	1.54	31.1	6,748	3,028
including	33.00	34.00	1.00	33.30		and	18.80	20.00	1.20	1.16	51.7	17,650	3,640
						and	33.00	36.00	3.00	8.70	29.3	13,067	652
RT-26	-	6.00	6.00	6.95		RT-26	3.05	6.00	2.95	5.08	17.1	2,312	5,940
including	1.00	2.00	1.00	17.37		and	9.70	13.20	3.50	0.51	8.3	1,798	2,057
and	12.02	13.00	0.98	2.80		and	17.00	26.50	9.50	0.50	28.5	6,710	1,095
and	17.00	18.00	1.00	2.98									
RT-27	9.76	12.00	2.24	1.49		RT-27	9.76	12.40	2.64	1.01	35.2	12,280	729
and	26.00	27.00	1.00	1.43		and	25.70	27.00	1.30	1.42	32.5	6,710	1,095
RT-28	1.52	10.54	9.02	1.93		RT-28	1.52	28.65	27.13	1.43	6.4	1,375	1,757
and	18.35	28.10	9.75	2.21		including	22.85	25.95	3.10	7.94			
including	23.34	25.71	2.37	5.99									
RT-29	1.20	8.00	6.80	2.75		RT-29	1.20	8.00	6.80	2.86	3.2	1,107	282
and	34.85	51.25	16.40	17.99		and	34.85	51.25	16.40	3.78	5.0	710	367
including	42.00	44.15	2.15	118.10		including	41.00	45.00	4.00	7.96	11.9	682	751
						RT-30	79.60	89.94	10.34	0.18	4.6	780	1,397

RT GOLD: Historic Diamond Drilling (2001)

DDH Number	From (m)	To (m)	Length	Gold g/t F. Assay
RT-1	13.50	15.00	1.50	1.16
And	24.00	25.50	1.50	4.59
RT-2	39.50	39.94	0.44	44.05
RT-3	62.18	62.85	0.67	49.99
And	105.76	106.10	0.34	54.89
RT-4	7.85	11.90	4.05	2.23
And	18.02	20.29	2.27	2.67
And	26.29	28.42	2.13	2.61
RT-6	9.07	30.48	21.41	3.10
Including	9.07	15.24	6.17	5.48
RT-7	10.08	30.00	19.92	2.41
Including	10.08	12.55	2.47	4.55
And	25.53	25.91	0.38	7.44
RT-11	12.01	29.10	17.09	5.32
Including	15.54	18.20	2.66	14.20
RT-12	17.41	21.76	4.35	4.71
RT-13	13.41	38.83	25.42	8.78
Including	19.85	22.75	2.90	19.81
Including	31.21	38.83	7.62	12.61
Including	33.72	34.72	1.00	28.24
RT-14	17.68	19.36	1.68	5.47
RT-15	12.80	19.20	6.40	5.85
RT-16	16.17	20.07	3.90	13.18
RT-21	1.52	10.97	9.45	5.08
RT-22	8.45	9.50	1.05	2.58
And	31.39	33.80	2.40	3.21
And	40.75	54.86	14.11	4.85
RT-25	33.00	36.1	3.1	12.97
Including	33.00	34.00	1.00	33.30
RT-26	0.00	6.00	6.00	6.95
Including	1.00	2.00	1.00	17.37
And	12.02	13.00	0.98	2.80
And	17.00	18.00	1.00	2.98
RT-27	9.76	12.00	2.24	1.49
And	26.00	27.00	1.00	1.43
RT-28	1.52	10.54	9.02	1.93
And	18.35	28.10	9.75	2.21
Including	23.34	25.71	2.37	5.99
RT-29	1.20	8.00	6.80	2.75
And	34.85	51.25	16.40	17.99
Including	42.00	44.15	2.15	118.10

DDH Number	UTM E DATUM PSAD 56	UTM N Garmin 12 GPS Data	Elevation Garmin 12 GPS Data	Azimuth North is 360°	Dip Horizontal is 0°	Length Measured From collar
RT-1	706462	9418622	1918m	355	-45	126.19m
RT-2	706448	9418611	1916m	355	-45	57.92m
RT-3	706479	9418667	1955m	340	-45	142.65m
RT-4	706436	9418644	1948m	147	-75	33.54m
RT-6	706436	9418644	1948m	127	-75	42.68m
RT-7	706436	9418644	1948m	115	-66	31.71m
RT-11	706434	9418684	1985m	310	-45	34.75m
RT-12	706434	9418684	1985m	310	-65	35.67m
RT-13	706434	9418684	1985m	280	-45	41.76m
RT-14	706434	9418684	1985m	280	-65	40.24m
RT-15	706434	9418684	1985m	344	-50	30.79m
RT-16	706410	9418661	1976m	310	-45	25.91m
RT-21	706384	9418645	1976m	-	-90	24.4m
RT-22	706353	9418697	2016m	155	-45	69.21m
RT-25	706144	9418499	2016m	310	-45	39.94m
RT-26	706144	9418499	2016m	330	-45	33.53m
RT-27	706144	9418518	2026m	215	-45	45.73m
RT-28	706397	9418691	1999m	-	-90	36.28m
RT-29	706397	9418691	1999m	180	-60	80.8m

